

16 APR 2018



Thank you for your email of 23 March 2018 requesting information on Housing New Zealand's development at Asquith Avenue, Mount Albert, Auckland. You refer to the proposal to build 20 four-bedroom units at this site that will be sold to the public, and ask:

"Can you please send me any relevant information on these properties."

I can confirm that Housing New Zealand is developing its land at 33 Asquith Avenue, Mount Albert, Auckland. The first stage of the development involves the construction of 20 one-bedroom units, which will be retained by Housing New Zealand for use as public housing. Construction of these units has already begun, and the units are scheduled to be completed in February 2019.

Housing New Zealand is in the process of subdividing and obtaining titles for the remaining land. Once this process is complete, we plan to sell the 20 vacant sections to builders to construct four-bedroom properties. Resource consent for these properties has been granted, and Housing New Zealand expects that marketing of these sections to builders will take place in August or September 2018.

I attach a copy of the master site plan for 33 Asquith Avenue development. If you have further questions about the development, I invite you to contact Marion Humphrey, Senior Stakeholder Relationship Manager, on (09) 261 5420. Housing New Zealand also provides regularly updated information on its developments, by suburb, on its website at <https://www.hnzc.co.nz/housing-developments-and-programmes/auckland-housing-programme/>.

I trust this information is helpful.

Yours sincerely

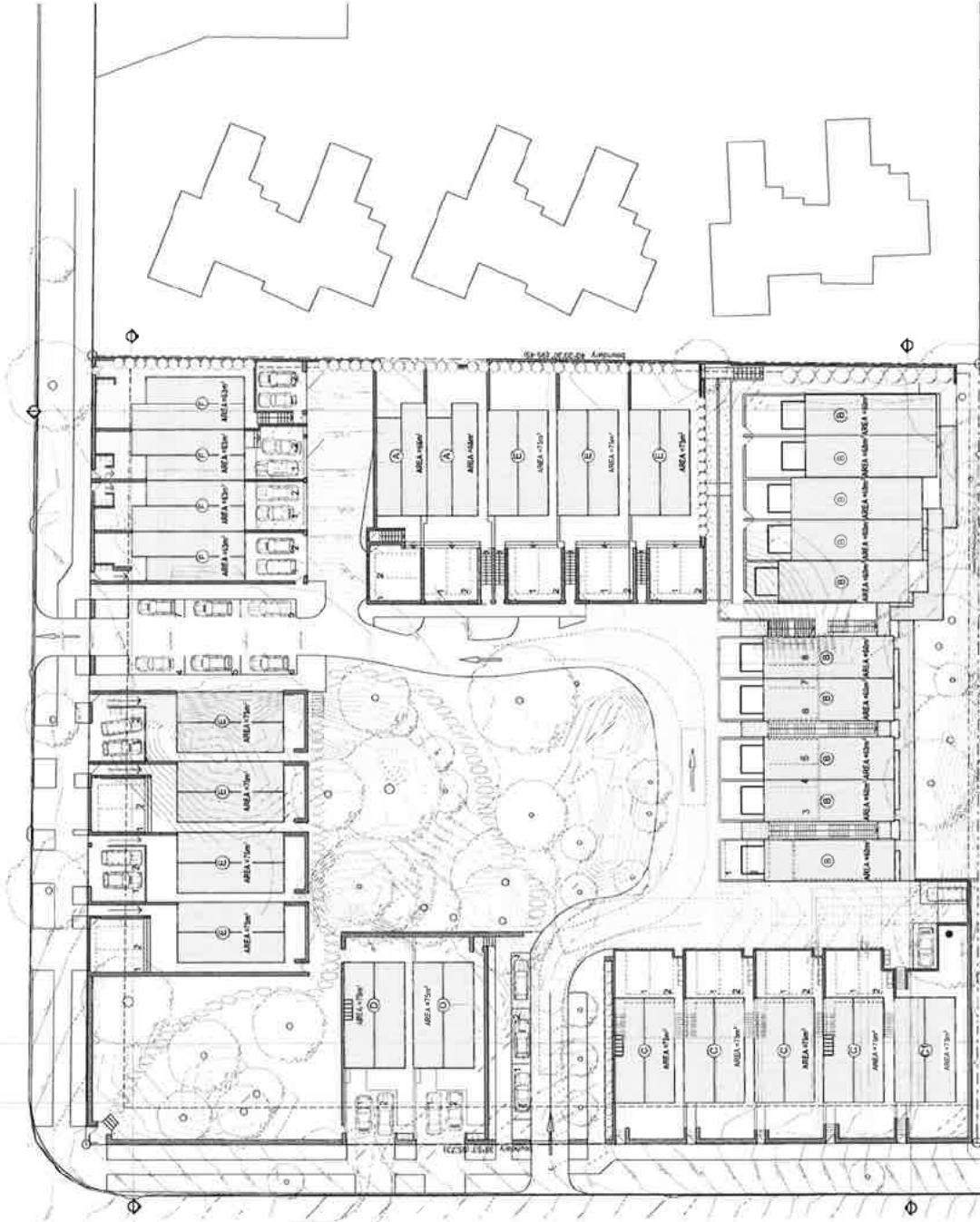
A handwritten signature in blue ink that reads "Rachel Kelly".

Rachel Kelly
Manager Government Relations



B U R C H S T

A S Q U I T H A V E



UNIT TYPE	NUMBER	AREA PER UNIT (excludes garage)	No. CAR SPACES
A 4 BED TERRACE - 2 STOREY	2	130	4 (2 per unit)
B 1 BED APARTMENT - 3 STOREY	20	61	8 (2 accessible car spaces)
C 4 BED RESIDENCE - 2 STOREY + Basement	4	125	2 (1 per unit)
D 4 BED RESIDENCE - 2 STOREY	2	150	4 (2 per unit)
E 4 BED RESIDENCE - 2 STOREY	7	150	14 (2 per unit)
F 4 BED TERRACE - 2 STOREY	2	150	4 (2 per unit)
TOTAL	40 (10,000m² gha)	136	48 (plus 3 visitor car spaces)

Asquith Avenue Residential Development

Site Master Plan