

1 September 2022

Community Reference Group

Mt Cook Developments
Rolleston, Arlington



Kāinga Ora
Homes and Communities



Agenda

1. Welcome and Introductions
2. Previous minutes and actions
3. Single Site Supported Housing update
4. Construction updates for Arlington
5. Construction updates for Rolleston
6. Any other business
7. Close

Next meeting 3 November 2022





Single Site Supported Housing

Rolleston update, September 2022

Block A:

- Brick cladding to eastern elevation underway
- Internal insulation installed, ready to be lined

Block B:

- Weatherline install has re-commenced
- Window joinery being installed

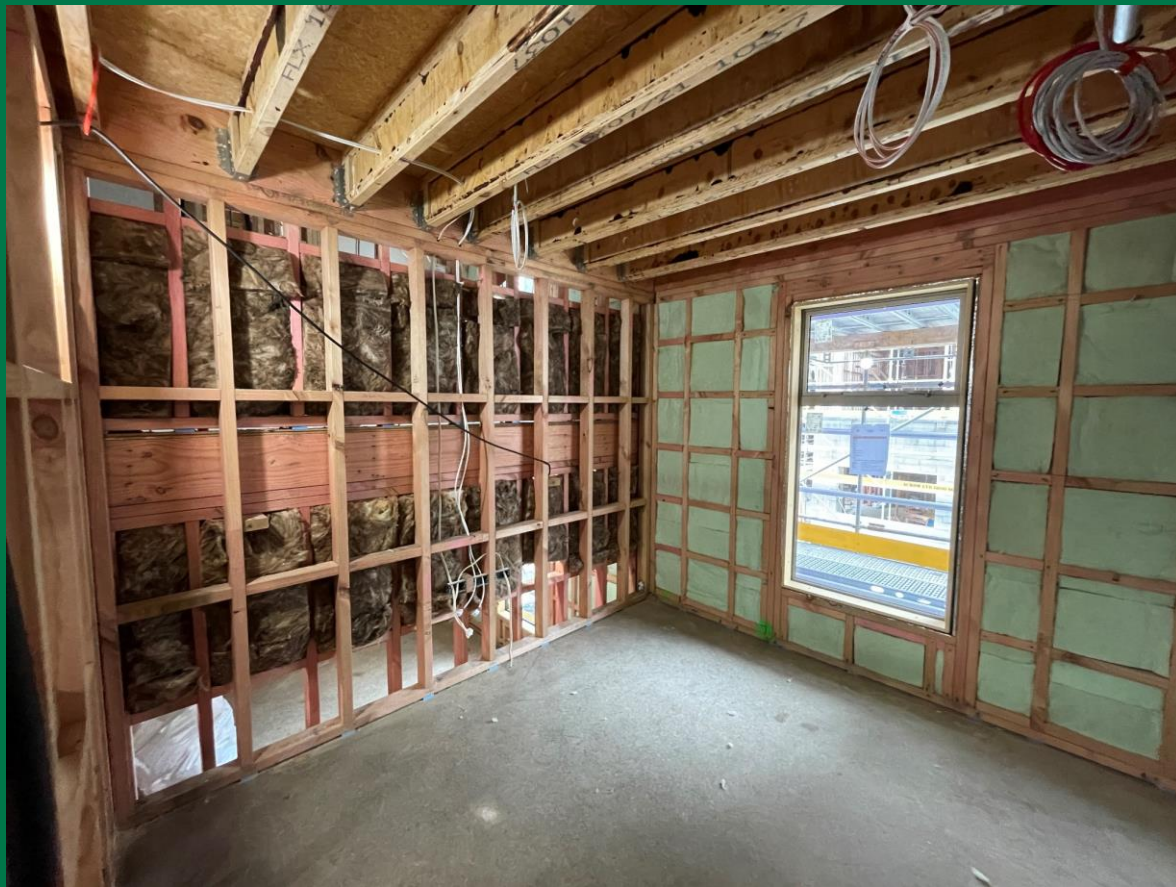
Block C:

- Internal insulation and linings progressing
- Equitone cladding install underway

Block D:

- Internal framing continues, along with services installation
- Weatherline and kalsi board install progressing





Block A.
Insulation installation has
commenced to all units



Block B.
Works have recommenced to
this block with weatherline
install underway (far end)





Block C.

A look inside the 'mock up' unit. Unit now being decorated following GIB install and 1st fix mechanical and electrical.



Block D.

Internal framing and 1st fix mechanical and electrical underway

Schedule of Accommodation

Block A: GF – 4 x 2B
FF – 4 x 2B
SF – 4 x 2B
1 x 2ST Hse
13 total

Block D: GF – 3 x 1B
FF – 5 x 1B, 6 x ST
SF – 7 x 1B, 6 x ST
TF – 7 x 1B, 3 x ST
FRF – 3 x 1B
40 total

Block B: GF – 2 x 2B\
FF – 2 x 2B
SF – 2 x 2B
1 x 2ST Hse
7 total

Block C: GF – 3 x 1B, 3 x 2B
FF – 4 x 1B, 3 x 2B
SF – 4 x 1B, 3 x 2B
20 total

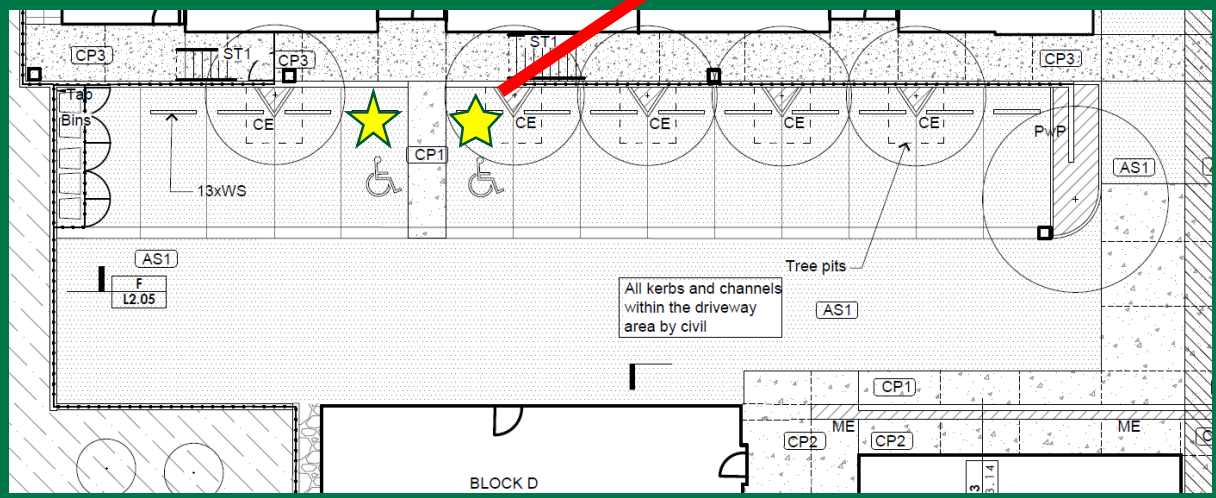


Accessible 'Friendly' Units - Location

- Block A: 4 Units, all ground floor
- Block B: 2 Units, both ground floor
- Block C: 5 Units, all ground floor
- Block D: 20 Units, split over all floors

2no. accessible parking bays provided

21 Parking Spaces:
19 Standard
2 Accessible



Arlington Update, September 2022

Building Consents

- Blocks JKLMNOP to be lodged for building consent by early September through Consentium

Construction

- Investigations for locating existing piles at blocks A&B is completed
- Piling Platform for blocks A&B is completed
- Continue to break out existing concrete
- Bulk excavation works to continue
- Construction of internal roads in progress

Next steps

- Begin the testing of piling platform
- Installation of piling for blocks A&B





Existing piles at block A

Existing piles explored at block B





Installation of piling platform in progress for blocks A&B

Piling platform for blocks A, B, near completion to proposed level

