

3 November 2022

Community Reference Group

Mt Cook Developments
Rolleston, Arlington



Kāinga Ora
Homes and Communities



Agenda

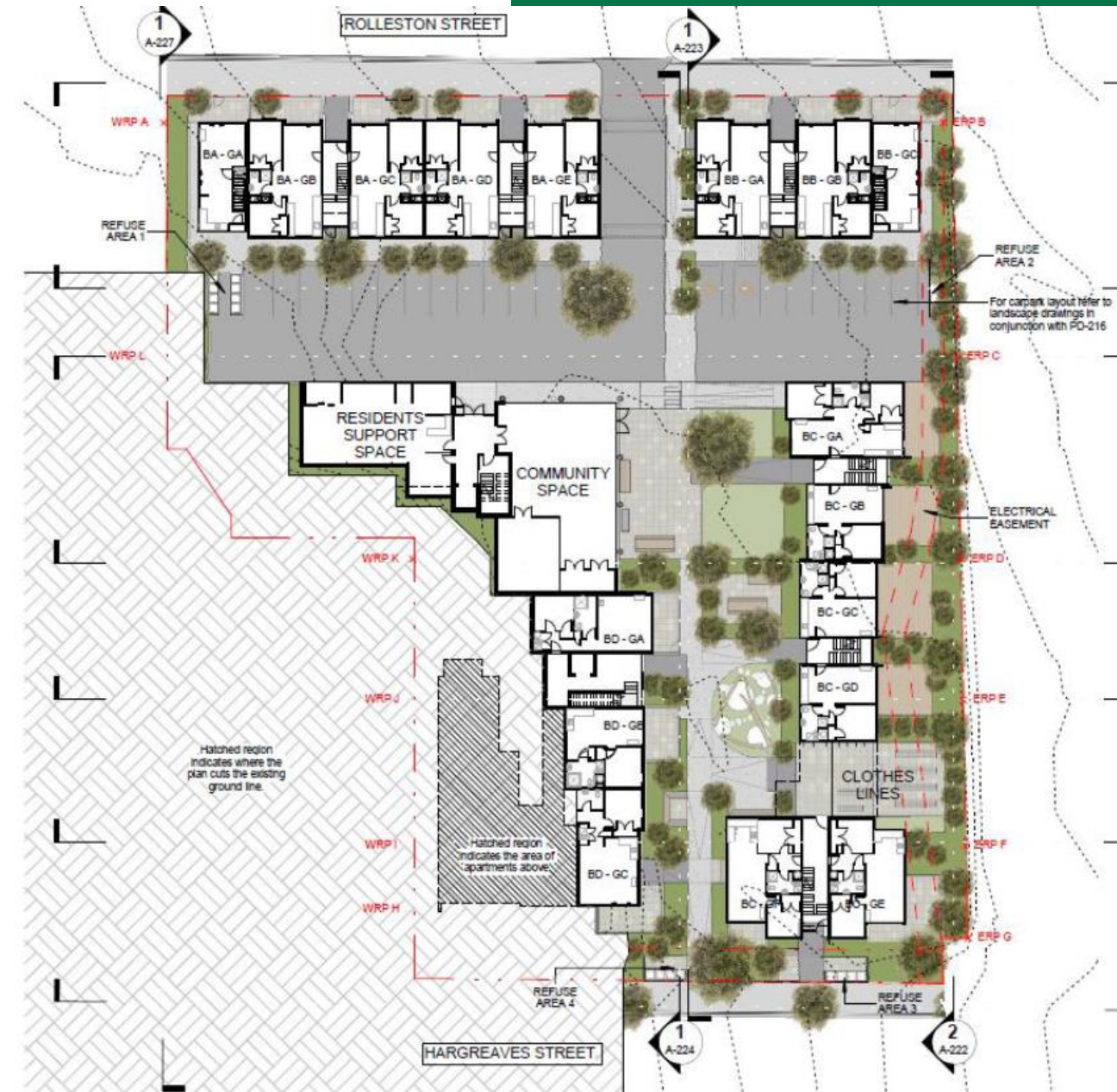
1. Welcome and Introductions
2. Previous minutes and actions
3. Presentation about Rolleston landscape design
4. Single Site Supported Housing
5. Construction updates for Rolleston
6. Construction updates for Arlington
7. Future CRG dates
8. Any other business
9. Close

Next meeting: to be confirmed



Rolleston – Landscape Design

James Marsh – Local Collective



Rolleston Street - Landscape Update

November 2022

- Landscape masterplan
- Street frontages
- Fencing strategy
- On-site amenity
- Planting strategy



Rolleston Street



solari ARCHITECTS

Street Elevations



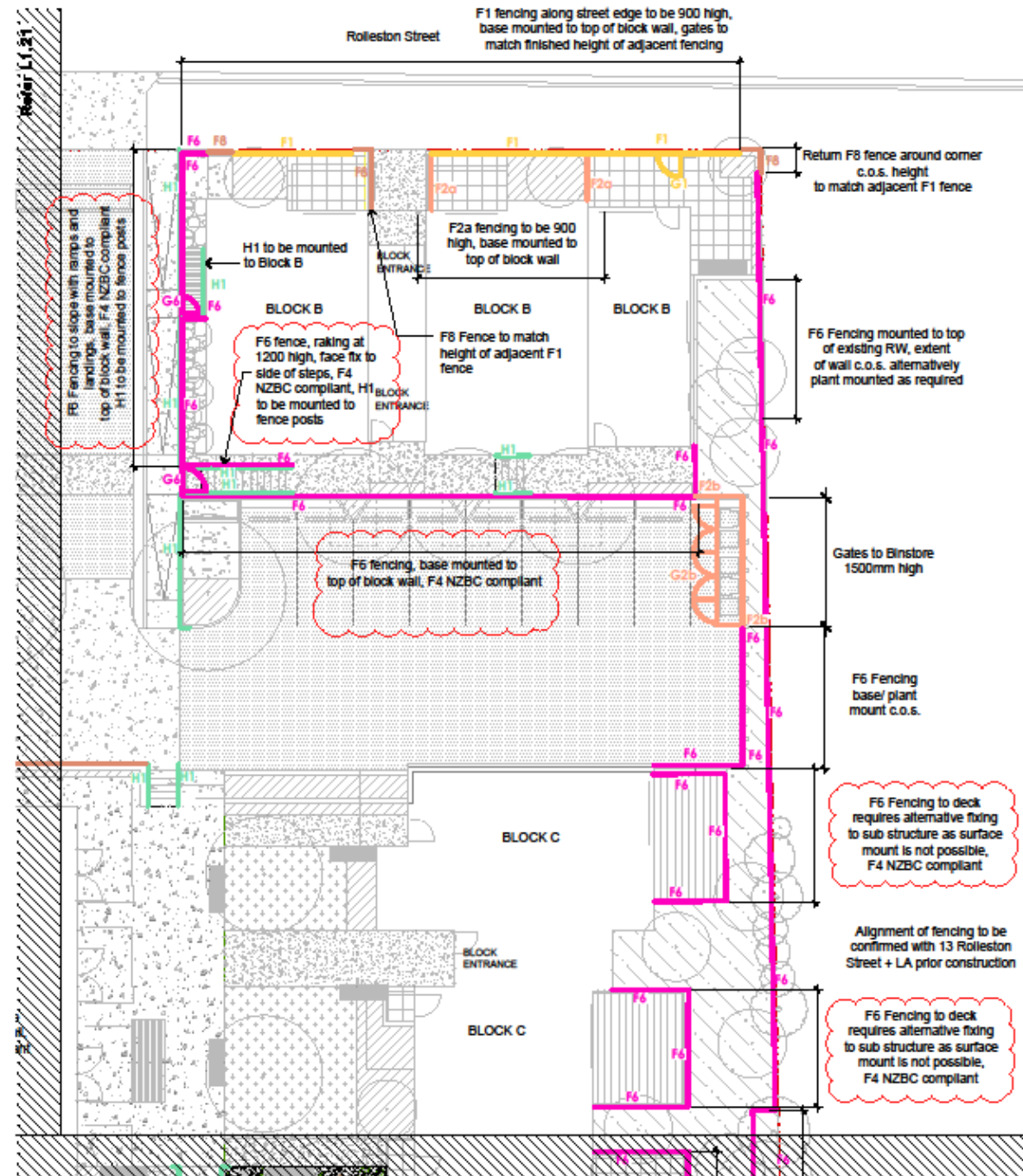
Rolleston Street



Hargreaves Street

Fencing

- Typically open vertical batten
- Refined fencing to street frontages
- Screening to binstores



Internal Community Spaces



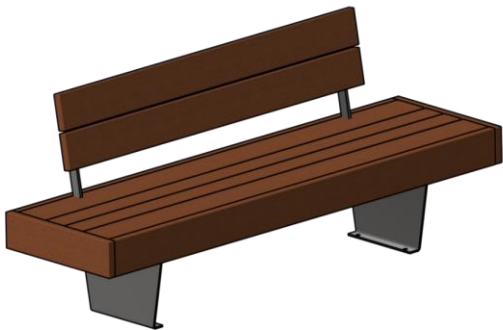
solari ARCHITECTS

On-site Amenity

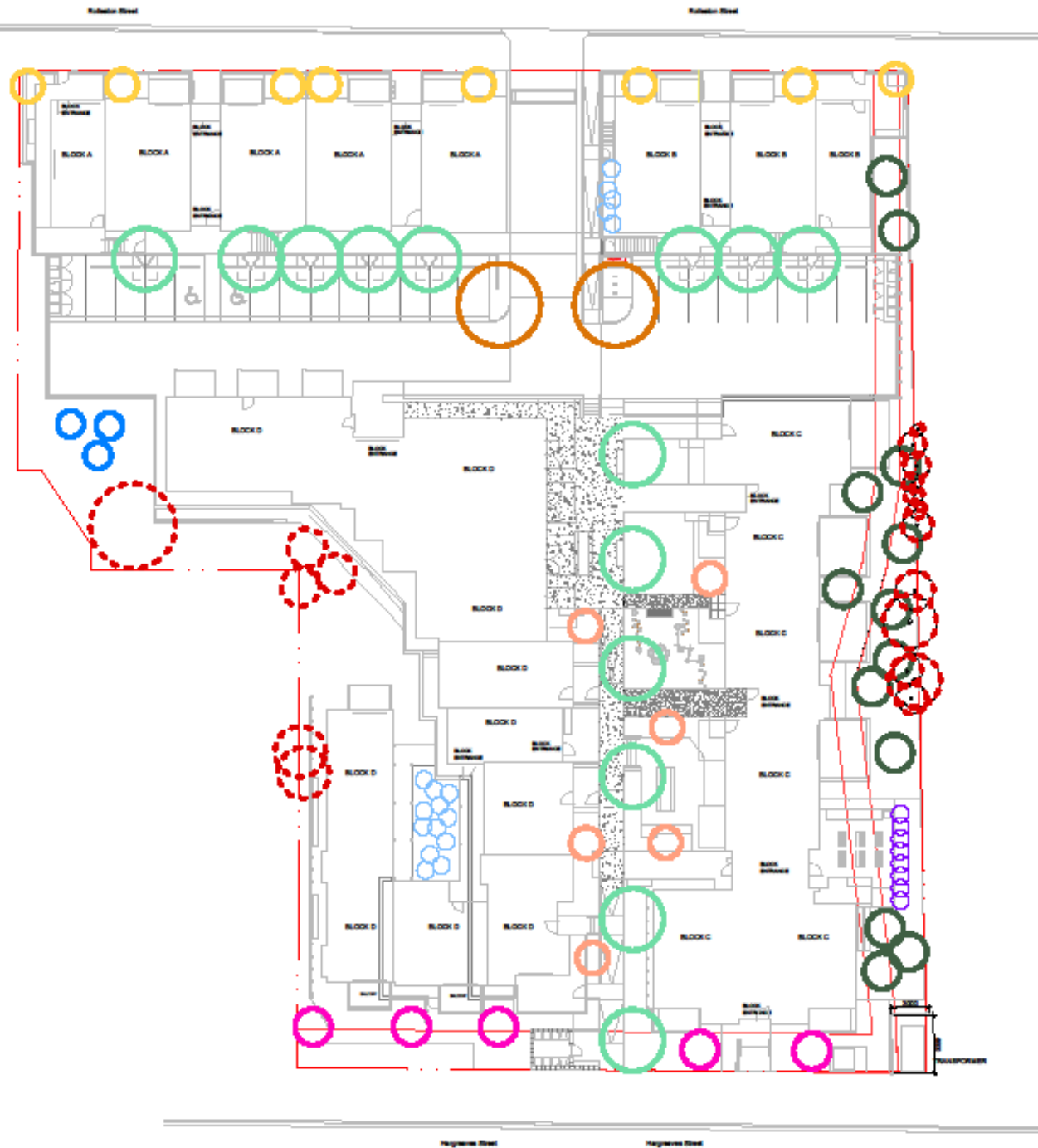
- Informal play elements
- Seating & picnic tables
- Lawns
- Electric BBQ
- Cycle stands
- Bin stores
- EV charging
- Herb garden and shed
- Fruit trees



Furniture | Play elements



Planting



LEGEND

Extent of works

Site works extent of works

- **Fruit Trees**
Apple/Pears/Citrus
- **Feijoa**
Feijoa 'Apollo'
- **Marble Leaf**
Carpodetus serratus
- **Puka**
Meryta sinclairii
- **Ribbonwood**
Plagianthus regius
- **Lancswood**
Pseudopanax crassifolius
- **Ornamental Pear**
Pyrus calleryana
- **Chinese Elm**
Ulmus parvifolia
- **North Is. Kowhai**
Sophora tetraptera
- **Existing Tree**

General Notes:

1. Refer SCH Planting Schedule for quantities and grades

Planting

GB01

11.40
m2

| Species | Common Name |
|------------------------------|--------------------|
| Arthropodium 'Matapouri Bay' | Renga renga lily |
| Asplenium oblongifolium | Shining spleenwort |
| Astelia nervosa | Bush astelia |
| Libertia ixioides | NZ Iris |
| Pratia angulata | Panakenake |

GB16

155.00
m2

| Species | Common Name |
|--------------------|--------------------|
| Hebe stricta | Koromiko |
| Phormium cookianum | Wharariki |
| Sophora molloyii | Cook Strait Kowhai |

GB29

51.40
m2

| Species | Common Name |
|------------------------|-----------------|
| Coprosma acerosa | Sand coprosma |
| Meuhenbeckia astonii | Shrubby toroaro |
| Phormium 'Green dwarf' | Flax cultivar |
| Poa cita | Silver tussock |



Rolleston - Single-Site Supported Housing model update

Work on the model continues with Kāinga Ora and Ministry of Housing and Urban Development staff looking to secure a service provider in 2023.

Rolleston Street development vision

The community has a strong sense of belonging and feels safe with aspirations to thrive. Together we empower and celebrate our diverse values, knowledge and experiences to work towards growth for our community.



Rolleston Update, November 2022

Block A:

- Cladding installation is ongoing
- Linings and internal fit out are progressing

Block B:

- Window joinery and glazing being installed
- Insulation install commencing shortly

Block C:

- Linings are progressing, along with external cladding
- Finishing trades have started in the mock up apartment

Block D:

- A mix of internal and external works continue
- Windows and glazing starting to be installed





Block A.
Metal cladding and brickwork is well underway to the block. Rear elevation shown in photo.



Block B.
Front elevation to Block B now starting to take shape



Block C.
A look inside the 'mock-up' unit.



Block D.

Numerous trades currently working through this block, both internal and external.

Photo shows one of the units undergoing first fix of services and fire protection.



Arlington Update, November 2022

Building Consents

- All apartment building consents now lodged. Final blocks (NOP) to be lodged mid-November.

Construction

- Piling is underway in block A&B
- Continue to break out existing concrete
- Bulk excavation works to continue
- Construction of internal roads in progress

Next steps

- Main services installation to start in ground within site.
- Installation of piling platforms in Block G,H&I





Existing piles at block A

Existing piles explored at block B





Installation of piling platform in progress for blocks A&B

Piling platform for blocks A, B, near completion to proposed level



Future CRG meeting dates

Any other business

