

5 May 2022

Community Reference Group

Mt Cook Developments
Rolleston, Arlington



Agenda

1. Welcome and Introductions
2. Previous minutes and actions
3. Introduce Single Site Supported Housing model
4. Construction updates for Arlington
5. Construction updates for Rolleston
6. Any other business
7. Close



5 May 2022

Supported housing Rolleston Development

Alice Daniel-Kirk - Manager Housing
Wellbeing

Kathy Furfie – Manager Operations



Supported housing at Rolleston

- Heard your feedback
- Reviewed housing framework internally and with MHUD



What is single-site supported housing?



- Permanent housing
- Community building
- On-site support services and concierge
- Property and building management
- 24/7 access to support



What might it look like in practice? *Greys Ave, Auckland CBD*

- 276 new homes in Auckland CBD
- 3,000sqm commercial and office spaces alongside shared amenities.
- Vision for SSSH: "People have a place to call home in a thriving, connected and well-functioning community with on-site access to the support services they require."
- Single-site supported housing accommodation
 - 24/7 concierge and community guardianship
 - On-site 24/7 support services
 - Operations manager
 - On-site Housing Support Managers
 - On-site facilities management



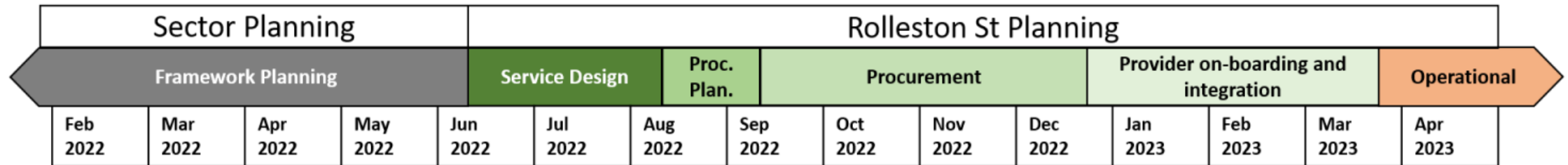
What might this look like at Rolleston?

- 24/7 onsite concierge and community guardianship
- On-site support services
- Housing Support Managers
- Facilities management
- Community coordinator



Proposed delivery timeline

Indicative timeline:



Patai/questions?



Arlington Update, May 2022

Building Consents

- Approval of first building consent packages for piling

Construction

- Agreement reached with NorthPower to undertake substation cable works
- Continuing breakout of existing concrete
- Bulk excavation works continue
- Construction of internal roads in progress

Next steps

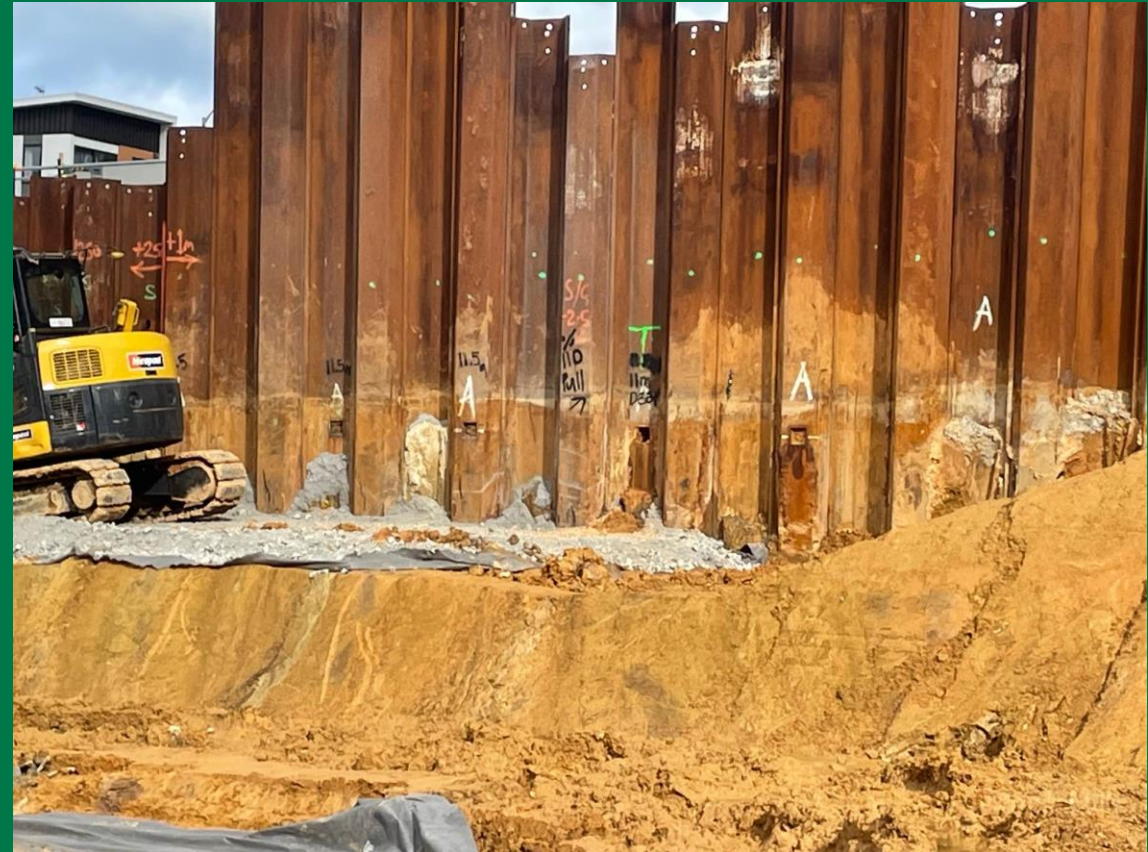
- Test piles to be drilled through out the block X building platform
- Begin the installation of piling
- Continue to remove concrete and foundations
- Naming workshop to be hosted 19th May



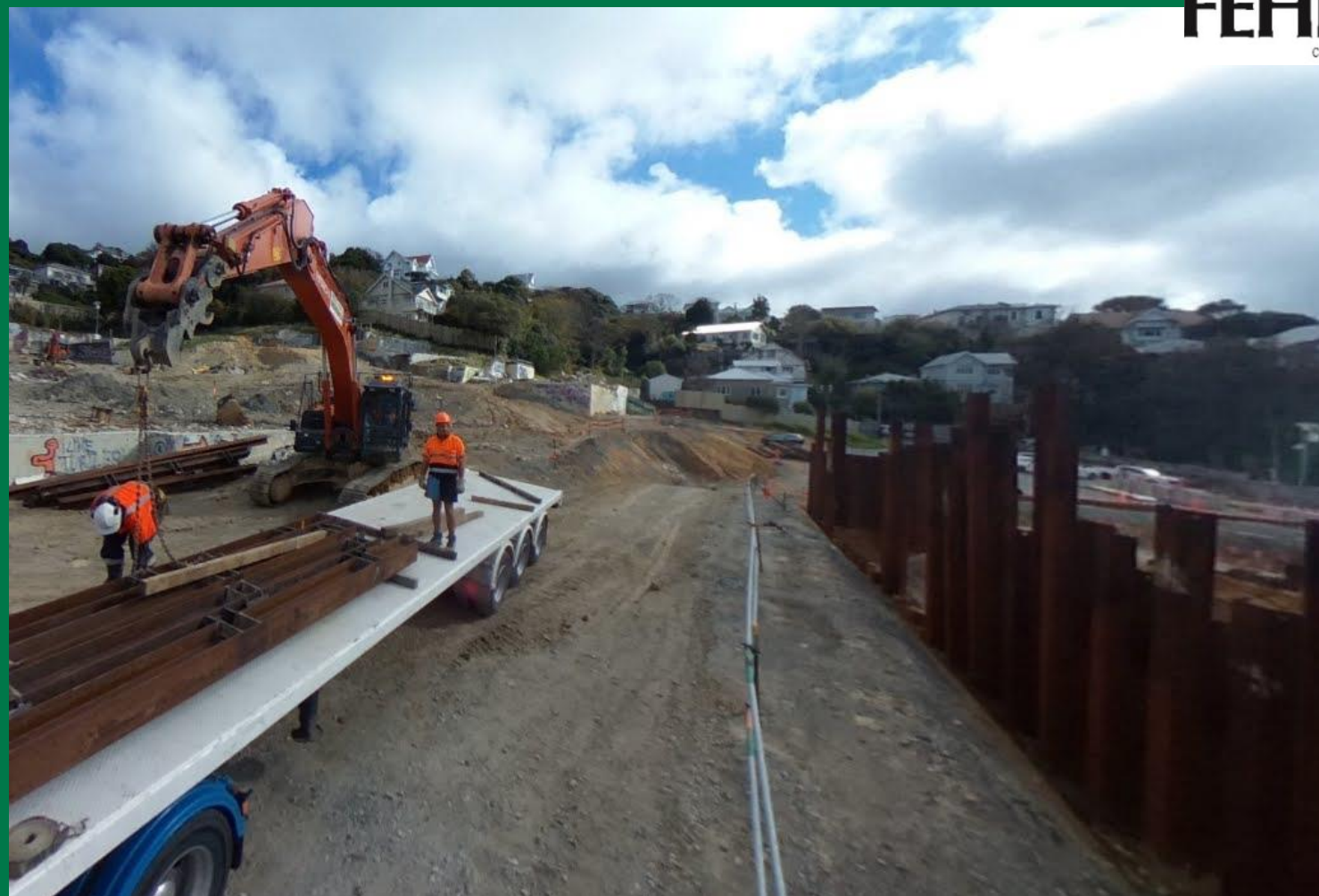


Improving the quality of the ground conditions in preparation for the block X build platform

Installation of rock anchors to secure the sheet piles



This haul road follows the same route as the new permanent road will, connecting Arlington and Hopper streets





Rolleston Development

Update – 05 May 2022

Block A:

- First fix plumbing and electrical ongoing
- Weatherline install

Block B:

- Roofing installation nearing completion

Block C:

- Windows delivered & installation progressing
- Roofing nearing completion

Block D:

- D1, D2 and D4 ready for weatherline and roofing installation
- D3 internal framing underway
- First plumbing and electrical





Block A.
Weatherline install to frontage due to commence shortly. Leaking water toby to the entrance has now been fixed by Wellington Water.



Block B.
Roofing installation nearing completion. Weatherline install to commence when material arrives.

Block C.
Windows have been delivered and installation
has commenced.



Block D.
Looking into the community space

