

1 July 2021

Community Reference Group

Mt Cook Developments
Rolleston, Arlington, Te Mara



Kāinga Ora
Homes and Communities



Agenda

1. Welcome and Introductions
2. Purpose Community Reference Group (CRG)
3. Terms of Reference and Code of conduct
4. Discussion on the Proposed meeting frequency and attendance
5. Kāinga Ora overview
6. Summary of Rolleston and Hawkins programme
7. Summary of Arlington and McKee FehI programme
8. Any other business
9. Close



Community Reference Group - Purpose

To create a forum for open communication between all parties interested in or impacted by Kāinga Ora activities, whether development related or pertaining to the ongoing operation of our sites and support of our customers.

- Information sharing
- Every two months
- Open invitation
- Open discussion
- Independently chaired
- Minuted

Terms of Reference

Details key operating obligations for the forum

- Meeting frequency
- Information distribution
- Key contact

Code of Conduct

Details key behaviours and expectations

- Allow and respect the ideas and beliefs of all the members
- Respect the groups decisions and the processes
- Contribute in a positive way to finding solutions to the issues or concerns
- Ensure the points of discussion are within the scope of the terms of reference
- Challenge ideas not individuals or their opinions
- Not use any inflammatory language or behaviour of any kind

Kāinga Ora: what we do

- Kāinga Ora, new Crown agency, established 1 Oct 2019.
- Brings together people, capabilities and resources of KiwiBuild, Housing New Zealand and its development subsidiary HLC.

Six outcomes:

- Sustainable, inclusive, thriving communities
- Good quality, affordable housing choices
- Partnering with Māori
- Customers live well in their homes
- Environmental wellbeing is enhanced and preserved
- Use our scale and expertise to make change within the construction sector



Supporting our customers to live well in their homes

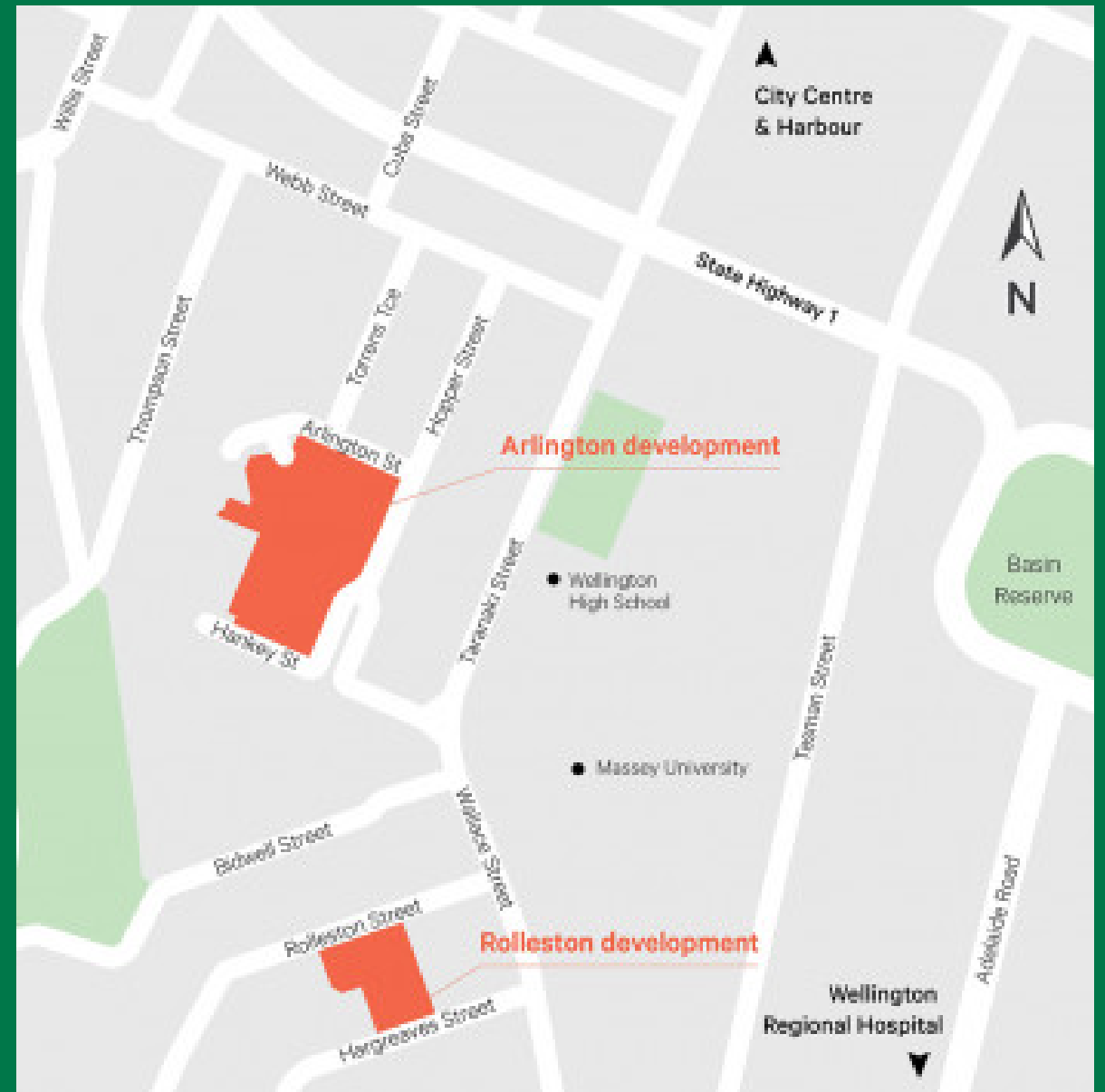
- Taking a strengths-based approach, we support and guide our customers, so they have choice and control to make the best wellbeing decisions for their whānau.
- We maintain in-depth knowledge about local support services.
- Build strong partnerships, so we can help customers understand the options available to them.



Mt Cook Developments

*A considerable programme of
work in a single neighbourhood*

To help meet the need for
housing for people in
Wellington, we're building 381
homes in inner city Mount
Cook, Wellington at Arlington
Street and Rolleston Street.



Rolleston Development

Key features

80 homes

- 36 one-bedroom
- 29 two-bedroom
- 15 studios

Includes 20 [Housing First supported housing homes](#)

All public housing

Community space, landscaping and gardens

Completion due mid-2022



Hawkins



Who We are

Hawkins is a Tier 1 National construction company with regional offices in Auckland, Hamilton, Christchurch and Wellington.

Established in 1951, Hawkins has a long history of delivering major construction projects across New Zealand.

Now part of the Downer Group, we have the largest construction and facilities management team in NZ.

We have a successful track record on delivering complex, challenging projects and have delivered local housing projects such as Newtown Park Flats, Berkeley Dallard and Te Mara Apartments.

Hawkins is excited to be the Main Contractor undertaking the works at 21 Rolleston Street, working in collaboration with Kāinga Ora, the design consultants and the local community.



The Hawkins Team



This project requires a broad range of expertise as it utilizes many building methods, from timber town house construction in Blocks A, B & C, to large structural steel with suspended concrete floors in Block D. Our onsite team has a broad range of construction experience that covers the full scope of activity on Rolleston Street which will ensure the delivery of a first-class project for Kāinga Ora and the local community.



Project Manager

Jody Farmer

Senior Site Manager

Marc Gouvernel

Senior Quantity Surveyor

Chris Albertson

Quantity surveyor

Nichola Du Plessis

Site Supervisor

Hayden McMorran

Foreman

John Thomas

Construction Cadet

Zina Gota

Hawkins



What's Happening ?

Onsite activity is focused on construction of building slabs and install of underground services.



We have Plumbers, Electricians, Drain layers and a Concrete Structures team onsite preparing slabs for the delivery of structural steel.



What's Next ?

First delivery of large 15 x 7.6 meter steel K frames. Due to their size the K frames will be transported over night with anticipated delivery at 4am and unloading expected to take approximately 2-3 hours. This will require a temporary road closure on Rolleston Street.

Rolleston questions



Arlington Development

Key features

301 homes

- 152 one-bedroom
- 105 two-bedroom
- 34 three-bedroom
- 8 four-bedroom
- 2 five-bedroom

Includes 40 supported housing homes

Around 234 state homes and 67 affordable homes

Community centre, parks, play areas, office space, community gardens

Completion from late 2023





Our Projects



1

**Heritage &
Restoration**



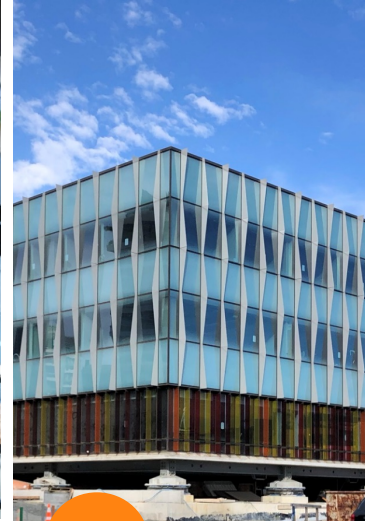
2

**Office &
Commercial**



3

**Retail &
Hospitality**



4

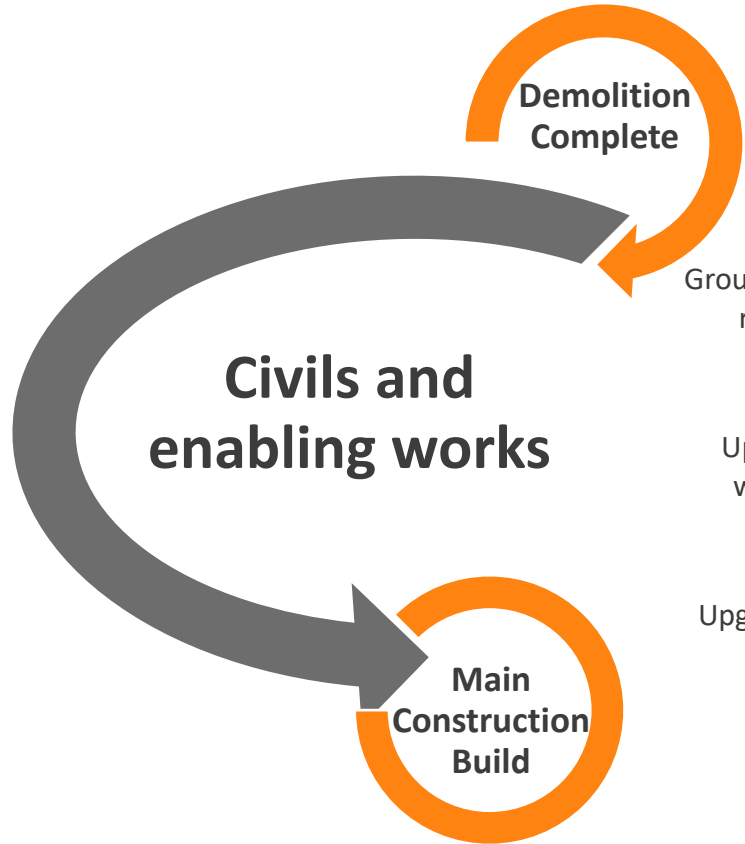
**Hospitals &
Healthcare**



5

**Residential &
Social Housing**

Arlington



Civils and enabling works

Civils Enabling Works

Ground clearance, removal of earthworks, new retaining walls, new roads and establishing building platforms.

Inground Works

Upgrades of existing stormwater and wastewater services. Installation and diversion of new inground services.

In street Works

Upgrade and connection to in ground services in Hankey, Hopper and Arlington Streets.

Demolition

This work has now been completed and the project is moving to the next phase.



Main Construction Build

The main construction build will be a future stage of the project.



Our Team



Maurice Clark
Managing Director



Stephen Cummings
General Manager



Stewart Peck
Project Director



Stephen Midgley
Project Manager

Tuwhakaraua Taute
Site Manager



Helen Moate
Project Manager

Arlington questions



Other Business



Thank you for attending the Community Reference Group

Josh Clark

Senior Stakeholder Relationship Manager

Josh.Clark@kaingaora.govt.nz

Mobile 021 54 1624

