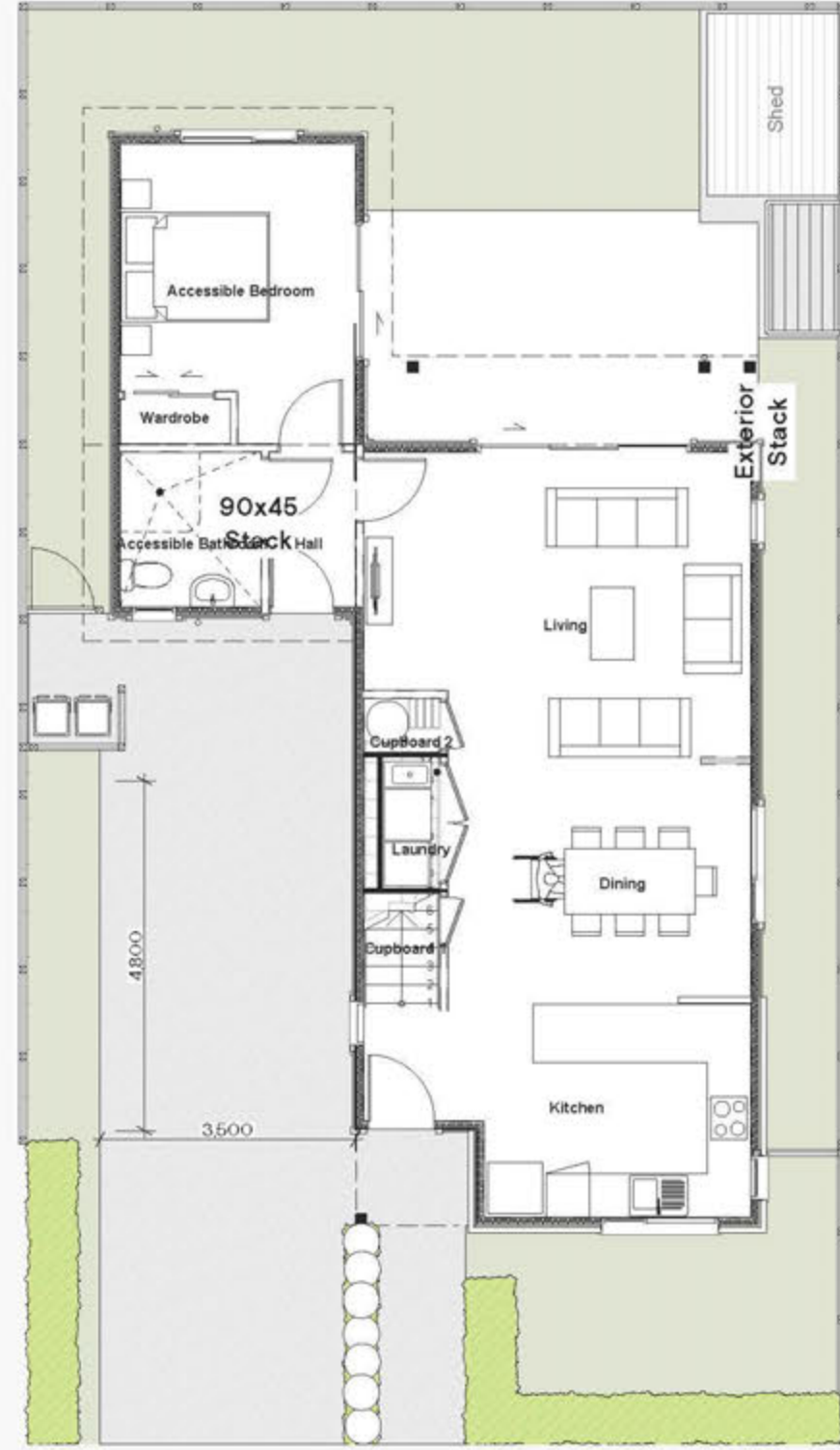
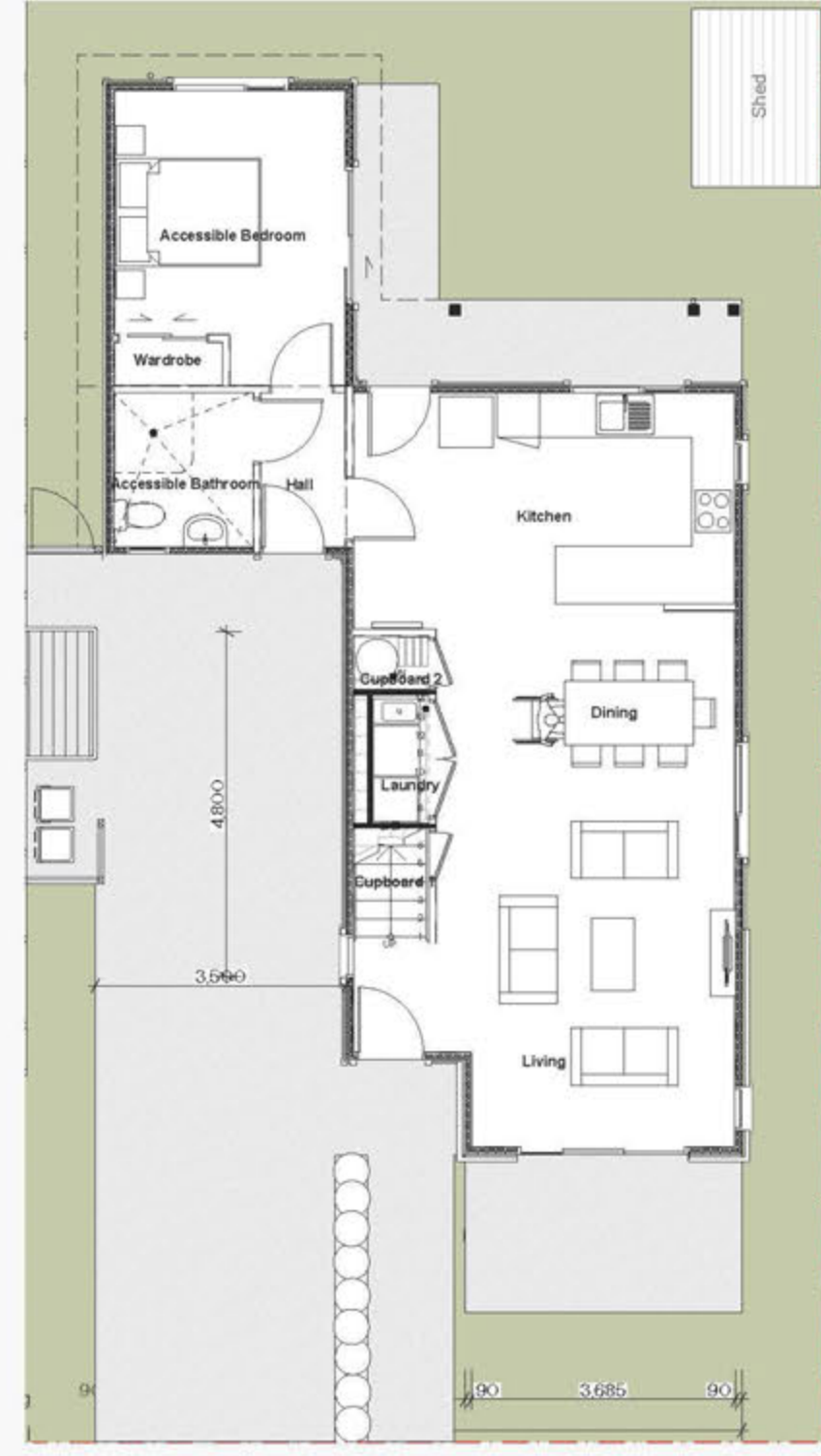


## 3 + 1 Bedroom Multiproof Features

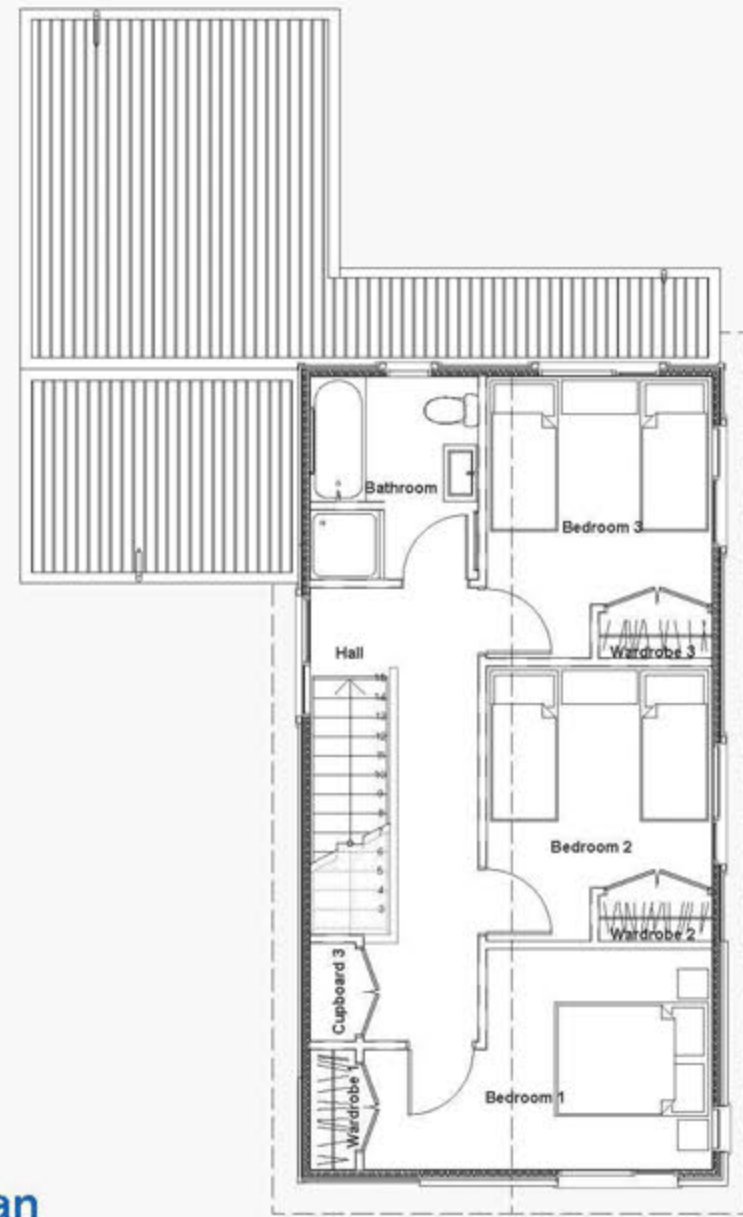
- North Facing Living Room 4.2 x 5.3m
- Kitchen / Dining 6.1 x 5.3m
- All 3 Bedrooms with Built-in Wardrobes
- Spacious North Facing Garden / Outdoor Living Space
- 2 Carpark Lot Minimum
- GFA 138 sqm



Ground Floor Plan



Alternative Plan (South Facing Living Room)



First Floor Plan



3D Axonometric Views



3B + 1 Example with Board and Batten / Weatherboard Cladding



3B + 1 Example Street View