

New Housing coming to Flaxmere, Hastings



We are looking at building new public housing in your neighbourhood to help meet the need for housing in your region. The new homes will be built as permanent public housing, and will initially be used to help meet the need for transitional housing in the area.

We are mindful of the impact building has on your community and want to keep you involved with the process.

Kāinga Ora – Homes and Communities is looking at building new, modern homes on Flaxmere Avenue and better utilise our landholdings.

We are building one four-bedroom and one five-bedroom home at 357 Flaxmere Avenue and one four-bedroom and one two-bedroom home at 342 Flaxmere Avenue.

What is the timeline?

Due to the Covid 19 lockdown, these dates may change and we will keep you updated to any changes in the timeline

Resource consent	From Early 2021
Start construction	From Mid 2021
Finish construction	From Early 2022



Questions?

Once residents move in, the housing and support services provider will be the main point of contact for residents and the community. Closer to the time, they will be in touch to let you know how to contact them.

In the meantime, if you have any further questions, please contact:

Jess Wilson

Stakeholder Relationship
Manager

Phone: 0800 801 601

(please ask to be transferred)

Email:

Jess.Wilson@kaingaora.govt.nz



Keeping disruption to a minimum

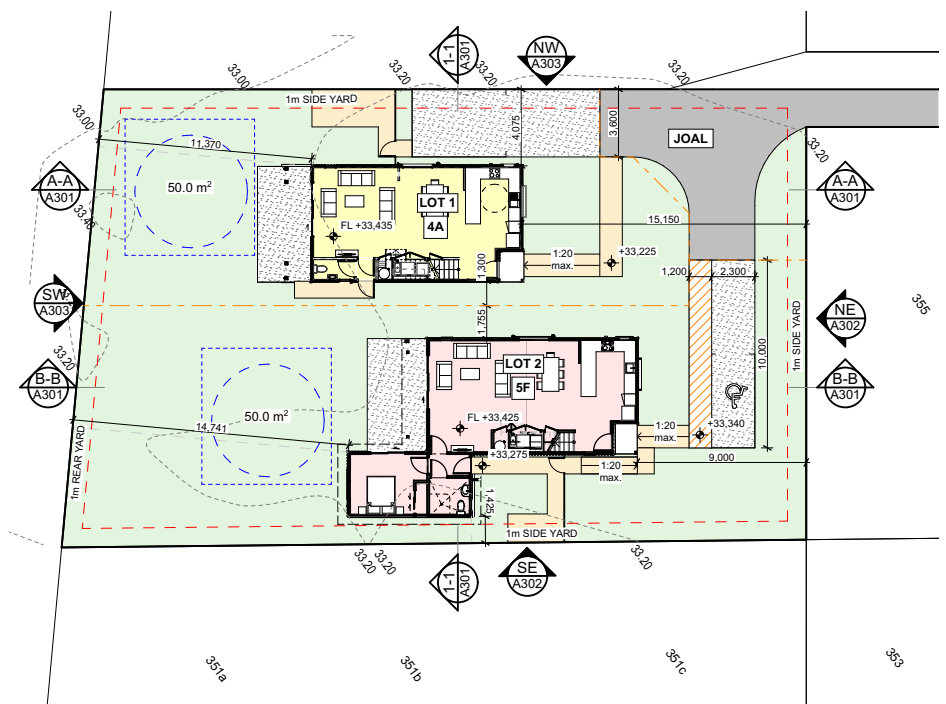
We will ensure that site and traffic management plans are in place for these developments. These provide rules and guidelines for what happens during construction.

The plans will cover items like the hours during which work can be carried out, where contractors can park their vehicles and the control of dust and noise. When the construction phase begins, we expect building activity to take place between 7:00am and 6:00pm Monday to Friday and 8:00am to 5:00pm on Saturdays, but not on Sundays and public holidays.

Supporting people and whānau

The new homes will be built as permanent public housing, and will initially be used for transitional housing. Transitional housing provides people with accommodation and wraparound support services while they are helped to find a more permanent place to live.

The people and whānau who will stay in these homes may already be living, working or going to school locally. Others will be from nearby areas or districts. The homes will be managed by a contracted provider of housing and support services who will make sure families living there are looked after, and will be a point of contact for neighbours and the community.



www.kaingaora.govt.nz

New Zealand Government

Kāinga Ora
Homes and Communities