

9 September 2022

Dear Resident

New homes coming to 42-50 Riselaw Street, Shirley, Christchurch

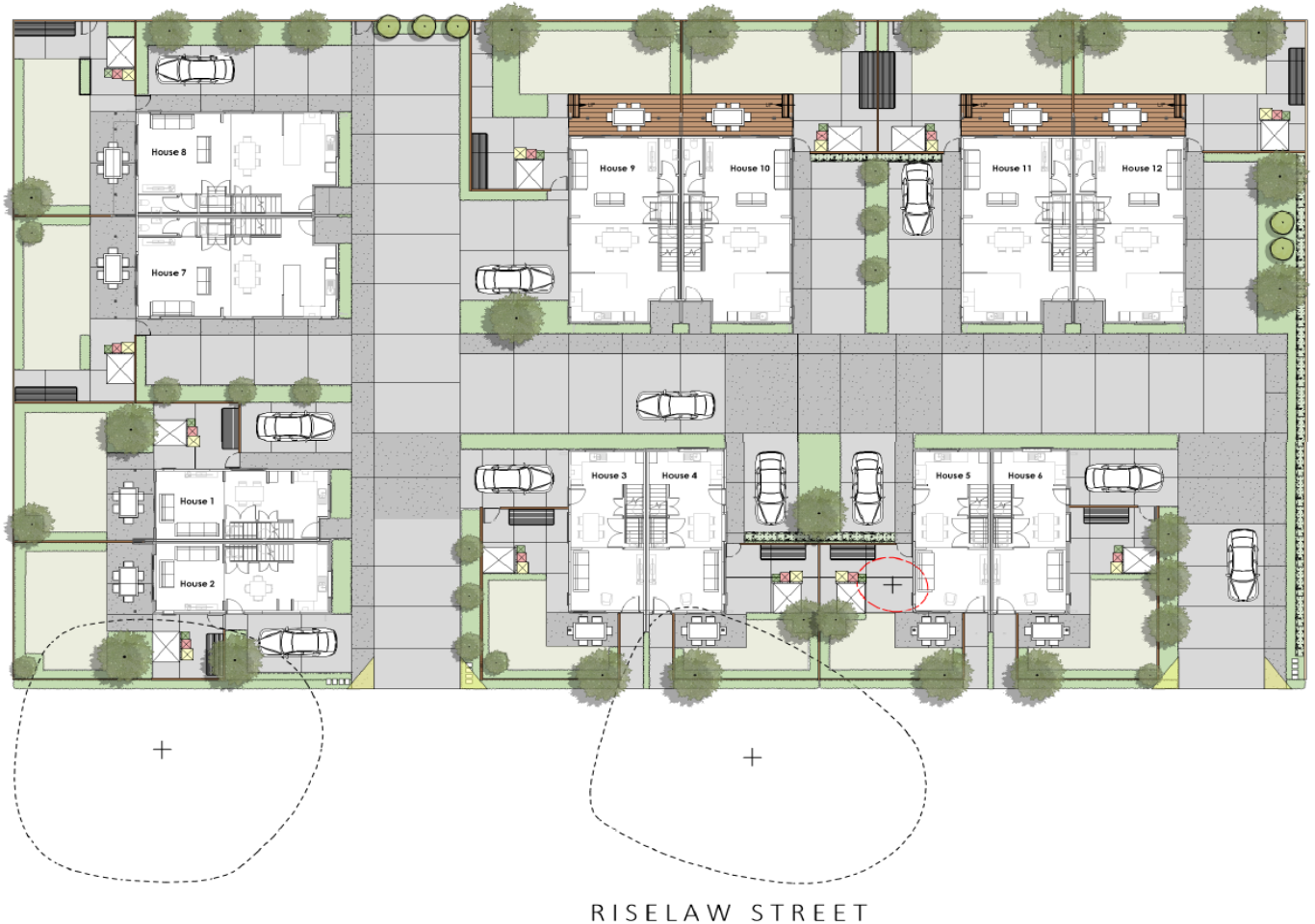
We wanted to provide you with an update about the Kāinga Ora housing development at 42-50 Riselaw Street, Shirley.

We wrote to you in January 2022 to inform you that 6 two-bedroom and 6 four-bedroom new homes are planned. These homes will be two-storey homes and will have private parking within the complex. These homes will provide people with a warm, dry, safe place to live.

There are changes to the scheduled time frames that we provided, with the onsite demolition now scheduled to start early-mid October. Construction is expected to follow and is now estimated to be completed in the third quarter of 2023.

We would like to provide you with an artist impression of the development and site plan. Please see below





Thank you for your patience during this redevelopment.

We will continue to keep you informed as plans progress.

If you are the resident but not the owner of your property, please pass this on to the owner for their information.

If you have any questions or want to know more please contact me on 021 227 3825 or email melissa.mccreanor@kaingaora.govt.nz

Yours sincerely



Melissa McCreanor Senior Stakeholder Relationship Manager