

December 2019

Kia ora koutou

### New housing for 51 Plumley Crescent, Māngere

We wrote to neighbours in October 2019 to advise that Kāinga Ora had lodged resource consent for redevelopment of the land at 51 Plumley Crescent. We now write to advise that Resource Consent for 51 Plumley Crescent has been granted by the Auckland City Council.

51 Plumley Crescent, Māngere	
Expected Completion: <b>Summer/Autumn 2021</b>	Planned: <b>Houses</b>
Architects': <b>Pacific Environments</b>	1x four-bedroom
Builders: <b>Penny Home</b>	1x four-bedroom with accessibility
Resource Consent: <b>Granted</b>	<b>Next Steps:</b> We'll be in touch when site work begins.
Zoning: <b>Mixed Housing Suburban.</b>	

As a neighbour of this redeveloped, we wanted to let you know how our new, warm, dry homes being designed will be situated in the local environment (shown in Figure 1 below and Figure 2 overpage).

Figure 1: Proposed East Site Elevation

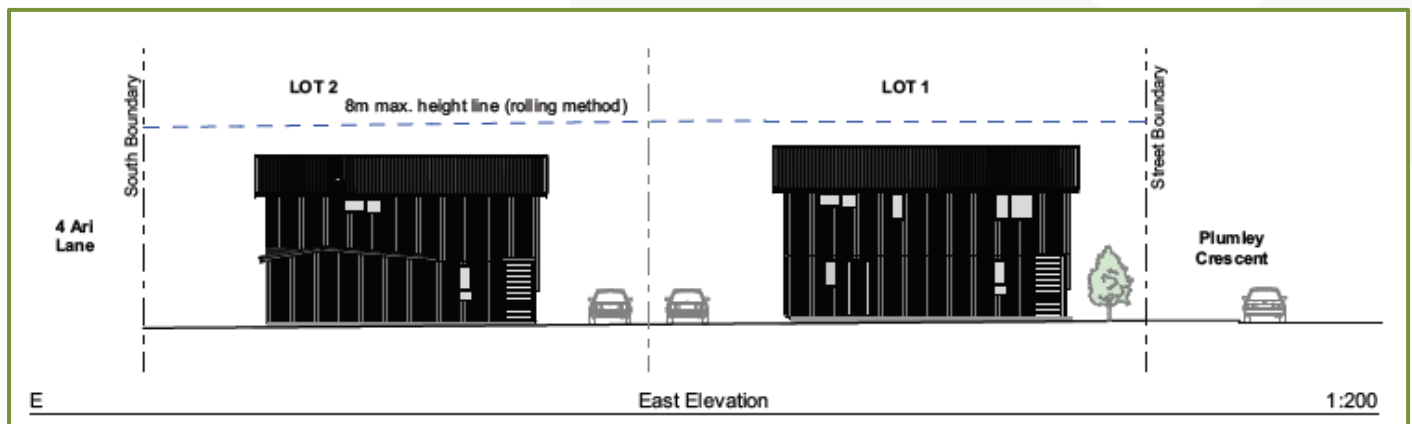


Figure 2: Proposed Planting Plan



Should you have any queries, please contact me via the contact details below.

Nāku, nā  
*Connie Ake*

Connie Ake  
Stakeholder Relationship Manager | P: 09 953 4475 | E: [connie.ake@kaingaora.govt.nz](mailto:connie.ake@kaingaora.govt.nz)