

An update from Housing New Zealand for 1-3 Yee Place, Mount Wellington

OCTOBER 2018



Background

The Housing New Zealand site at 1-3 Yee Place, Mount Wellington accommodated two three-bedroom houses.

These homes, built in 1989, no longer matched demand, did not make the best use of our land, and were not designed to meet the needs of today's tenants.

So Housing New Zealand is redeveloping the site. We will be replacing the existing houses with modern, healthy, warm, dry homes that support contemporary living and complement the local environment.

What will be built?

Housing New Zealand is building 45 new homes:

- 6 one-bedroom homes
- 9 two-bedroom homes

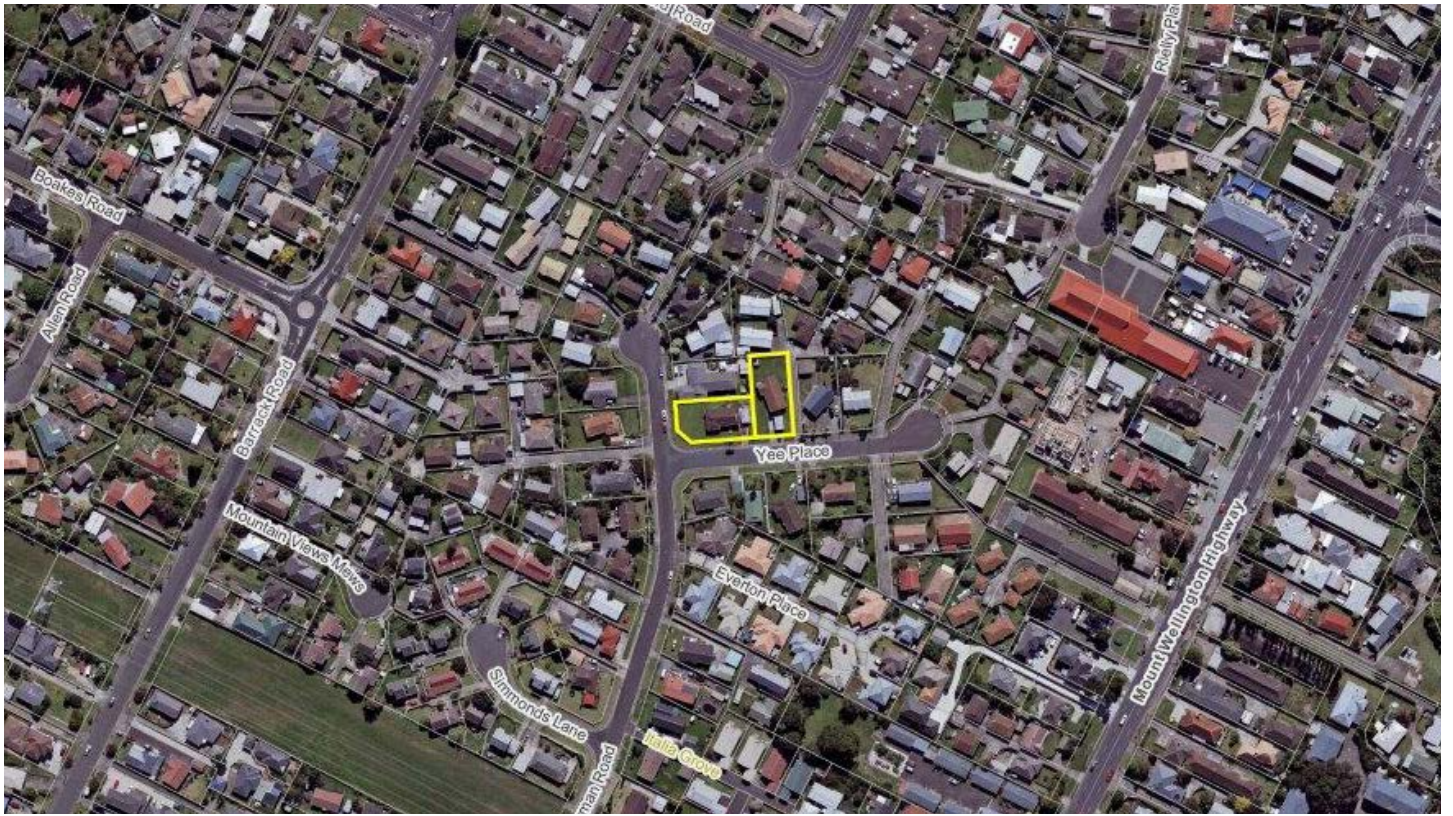
Building fifteen homes where there were only two makes the most of the 1,350 sqm site and will enable Housing New Zealand to better meet demand for social housing in the area.

The new homes will be designed and built to modern standards and will include double glazing, insulation and modern materials and fittings inside and out. The two-bedroom homes will have a dedicated off-street parking space.

How will the site works be managed?

Auckland Council has granted Housing New Zealand Resource Consent for this development, which has been architecturally designed by Babbage Architects. The homes will be built by Housing New Zealand in collaboration with our build partner Keola Ltd.

Housing New Zealand will aim to minimise any disruption to the neighbourhood caused by construction activity. All site works will be carried out in accordance with Council requirements. These include things like the hours when work can be carried out, where contractors can park their vehicles, and how noise and dust are controlled.



What happens once the project is finished?

Once the new homes are completed, we will match them to eligible people from the social housing register who need a home of the type (one, two, three-bedroom) included in the development.

Expected timeline

- 1 Early 2017**
Work starting to demolish/remove existing homes
- 2 April 2018**
Building works expected to start
- 3 June 2019**
New homes complete

If you have any questions about this development, please contact:

Catherine Gilhooly

Stakeholder Relationship Manager, Housing New Zealand
(09) 261 5546
catherine.gilhooly@hnzc.co.nz