

18 August 2020

Kāinga Ora
PO Box 2628
WELLINGTON 6140

For the attention of: Janine Allen



Janine

Parking Surveys, Newtown

Background

Kāinga Ora is proposing to develop two sites at 124-130 and 131 Coromandel Street in Newtown. These developments will result in a loss of three kerbside parking spaces. In order to assess potential effects upon parking availability in this area, Kāinga Ora has requested that surveys be undertaken of existing parking usage within the potential area of effect.

Surveys

Consistent with guidance from Wellington City Council (**WCC**), surveys have been undertaken at 10am and 8pm (indicative of daytime and overnight usage respectively) on each day between and including Saturday 8 - Wednesday 12 August 2020.

The surveys have recorded parking usage for the geographic area shown by **Figure 1**. This area was subdivided into seven zones, labelled A – G.

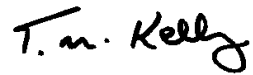
Information was collected by the use of an in-vehicle dashcam with a vehicle driven around a clockwise route within the area, commencing at the times above. The dashcam footage was then analysed to quantify the number of parked vehicles within each of the zones.

Results

Table 1 gives the results for each of these areas and for each survey day / time. **Figure 2** summarises the total number and percentage of occupied and vacant spaces.

The results for area F (Coromandel Street to the south of the Colville Street intersection) show a negative number of vacant spaces in two of the survey periods (on Sunday 9 August). This is because up to two vehicles are occasionally parked in an area marked with broken yellow lines which have not been included in the count of the number of available spaces. This results in the total number of parked vehicles exceeding the number of legitimate spaces.

Yours sincerely,

A handwritten signature in black ink that reads "Tim Kelly". The signature is written in a cursive, slightly slanted style.

Tim Kelly

Tim Kelly Transportation Planning Limited

(Phone: 027-284-0332, E-mail: tim@ktpl.co.nz)

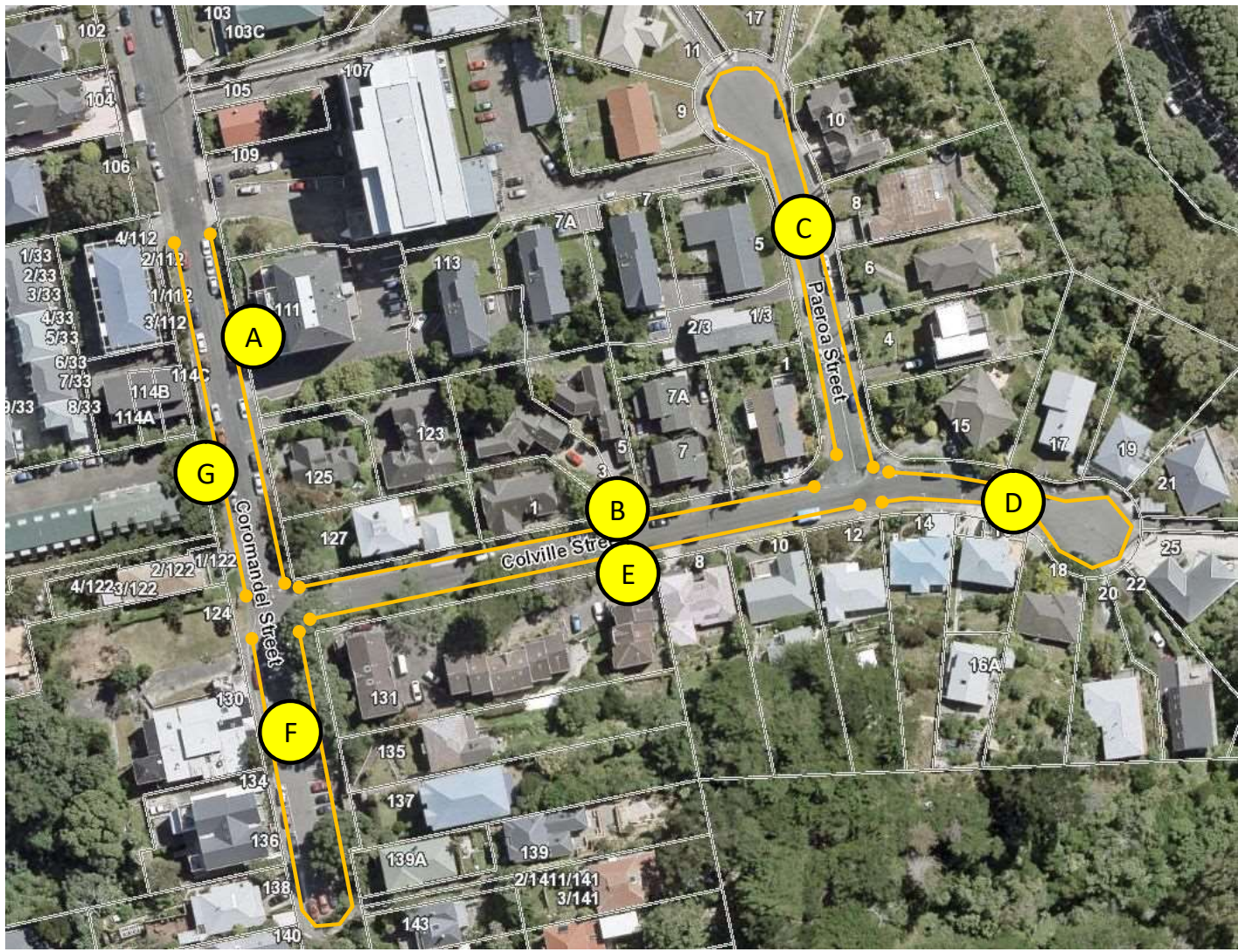


Figure 1: Location of Parking Areas A - G

Area	# Spaces	Location	Number of Parked Vehicles										Number of Vacant Spaces									
			Sat 8 Aug 2020		Sun 9 Aug 2020		Mon 10 Aug 2020		Tue 11 Aug 2020		Wed 12 Aug 2020		Sat 8 Aug 2020		Sun 9 Aug 2020		Mon 10 Aug 2020		Tue 11 Aug 2020		Wed 12 Aug 2020	
			10am	8pm	10am	8pm	10am	8pm	10am	8pm	10am	8pm	10am	8pm	10am	8pm	10am	8pm	10am	8pm	10am	8pm
A	12	Coromandel [NE]	9	6	5	9	8	7	6	7	6	9	3	6	7	3	4	5	6	5	6	3
B	13	Colville [NW]	7	6	6	5	5	5	4	5	3	8	6	7	7	8	8	8	9	8	10	5
C	24	Paeroa [ALL]	16	20	10	17	11	12	9	15	10	14	8	4	14	7	13	12	15	9	14	10
D	12	Colville [East]	7	9	6	8	9	6	9	5	8	6	5	3	6	4	3	6	3	7	4	6
E	14	Colville [South]	5	6	3	6	3	4	3	4	3	6	9	8	11	8	11	10	11	10	11	8
F	25	Coromandel [S of Colville]	21	23	26	26	21	24	20	25	19	25	4	2	-1	-1	4	1	5	0	6	0
G	13	Coromandel [NW]	7	5	5	9	8	11	10	9	9	12	6	8	8	4	5	2	3	4	4	1
TOTALS	113		72	75	61	80	65	69	61	70	58	80	41	38	52	33	48	44	52	43	55	33

Table 1: Results for Parking Zones A - G

Figure 2: Observed Parking Occupancy (Total)

■ Occupied ■ Vacant

