

New Housing coming soon to Stout Street, Mangapapa

We're building new homes in your area to help meet the need for housing. These modern, warm and dry homes will be fully insulated, with carpets curtains and double glazing.

What will be built?

We are looking to begin working at 240 – 242 Stout Street, Mangapapa soon.

Everyone deserves a warm and dry home and this building project will help provide more families in need with a place to call home.

We are mindful of the impact that this development will have on your community and will ensure that any disruptions from construction works such as noise and dust will be kept to a minimum.

We expect that construction of the new homes will begin during the first half of 2021 and we are aiming to finish building by the end of this year. Please note that public access is not permitted on these sites once construction begins.

Health and safety is important to us and we will ensure that our contractors adhere to all of our health and safety processes and procedures.

We anticipate that building activity will take place between 7:30am and 6:00pm Monday to Friday and 8:00am to 5:00pm on Saturdays. No work will be carried out on Sundays.

What is the timeline?

Start construction	from first half of 2021
Finish construction	from second half of 2021



Questions?

For more information on where we are building new homes in your area, please visit our website: www.kaingaora.govt.nz

If you have any further questions, please contact:

Dale Grant

Senior Stakeholder
Relationship Manager

Phone: 0800 801 601

(please ask to be transferred)

Email:

Dale.Grant@kaingaora.govt.nz

Landscaping and fencing

Each home will be landscaped with shrubs and an easy-to-maintain, private section. We will also be looking to provide fencing for these sites on a case by case basis. Kāinga Ora project managers will be in touch about this aspect of the build if this is necessary.

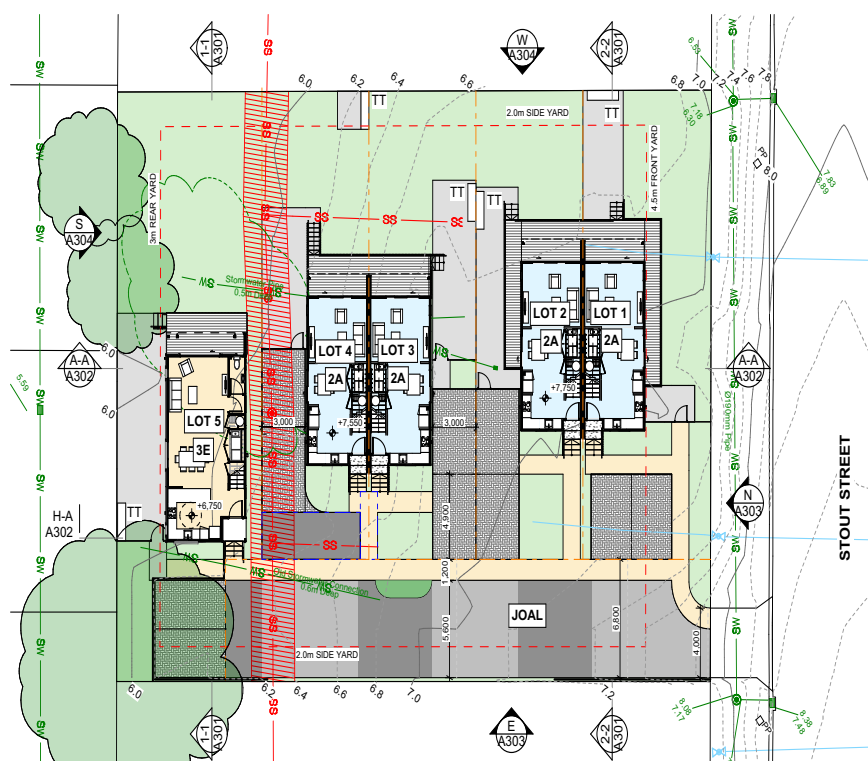
Who will live in the new homes?

Kāinga Ora will match homes to individuals and families on the Ministry of Social Development's Housing Register with the highest priority for a home of that size and in that location.

The size of the homes means they'll be suitable for small and medium families.

Supporting tenants

We always help our new tenants settle in to their new home and community. A key focus of ours is to ensure that tenants understand their responsibilities and that includes being good neighbours and connecting with their communities. Kāinga Ora is also looking at new ways of how we support tenants and help them connect to support services when and if they need it.



www.kaingaora.govt.nz

New Zealand Government

Kāinga Ora
Homes and Communities