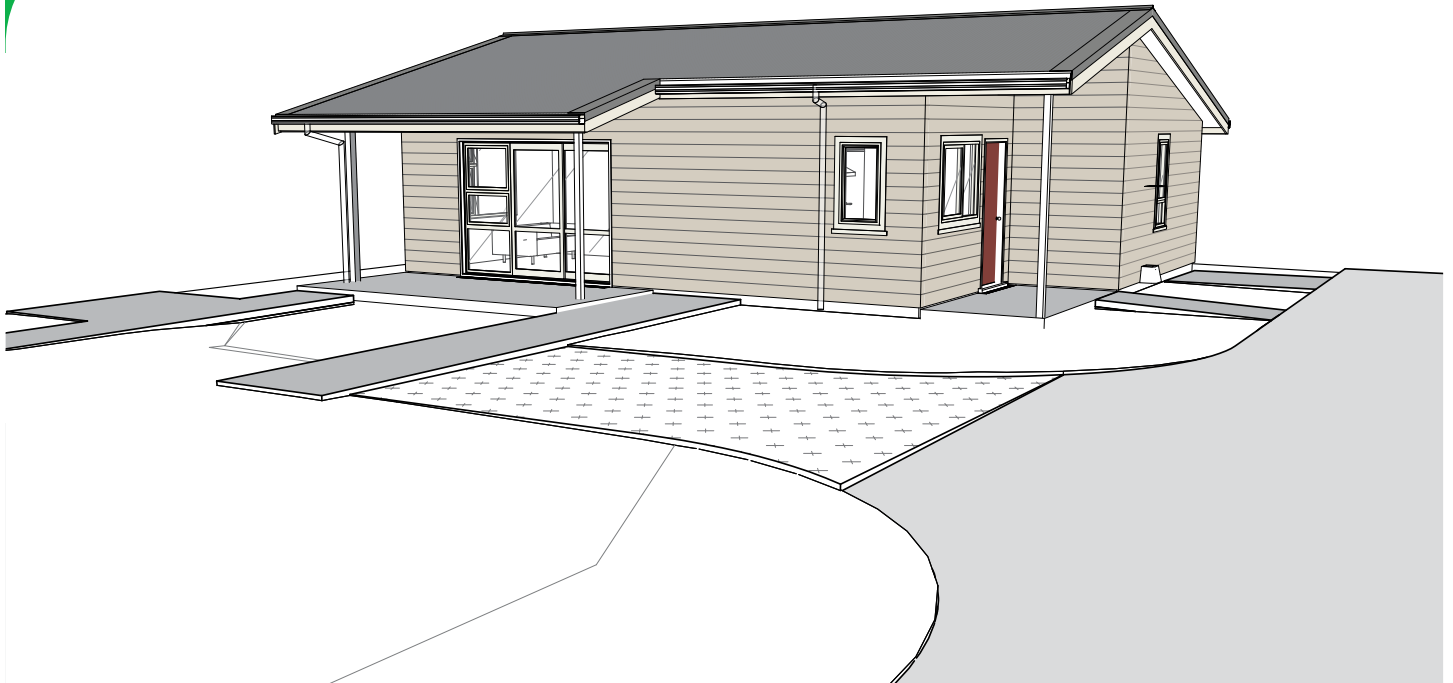


# New Housing coming to Taradale, Napier



**Work will soon be under way for building new state housing in your neighbourhood to help meet the need for housing in your region.**

Kāinga Ora – Homes and Communities will be constructing these new, modern homes on vacant land and larger properties to better utilise our landholdings.

We are mindful of the impact building has on your community and will ensure that any disruptions from construction work such as noise or dust will be kept to a minimum.

## What will be built?

King Street presents an opportunity to create higher density in the heart of an existing community, close to a local school and nearby main transport routes.

The site is across a total area of 350m<sup>2</sup> with a no existing units.

Due to the demand for housing in this area, we are utilizing the land to build 1 two-bedroom accessible home.

The new, low maintenance home will be fully insulated, with carpets, curtains and double glazing.

Where we are building homes on properties that are currently tenanted, we will ensure that there is adequate space between properties as well as fencing.

Above is a picture of what one of the new homes may look like.



## Questions?

If you have any further questions or, feedback about the proposed development please contact:

**Jess Wilson**  
Stakeholder Relationship  
Manager

**Phone: 0800 801 601**  
(please ask to be transferred)

**Email:**  
[Jess.Wilson@kaingaora.govt.nz](mailto:Jess.Wilson@kaingaora.govt.nz)



## What is the timeline?

Start construction	From November 2021
Finish construction	June 2021

## Keeping disruption to a minimum

We will ensure that site and traffic management plans are in place for these developments. These provide rules and guidelines for what happens during construction.

The plans will cover items like the hours during which work can be carried out, where contractors can park their vehicles and the control of dust and noise. When the construction phase begins, we expect building activity to take place between 7:00am and 6:00pm Monday to Friday and 8:00am to 5:00pm on Saturdays, but not on Sundays and public holidays.

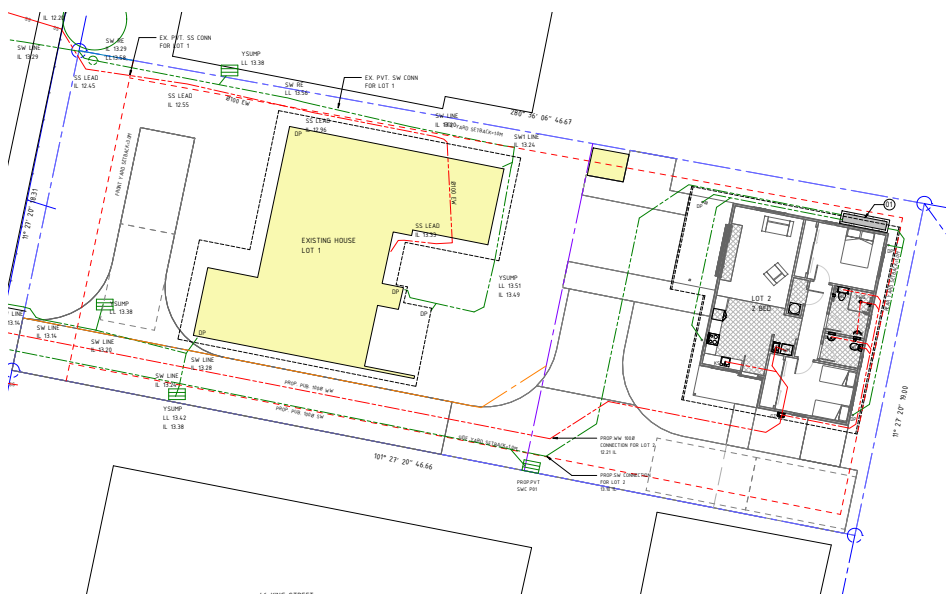
## Who will live in the new homes?

Kāinga Ora will match these new homes to individuals and families from our Community Group Housing programme.

The size of the homes means they'll be suitable for small families.

## Supporting tenants

We always help our new tenants settle in to their new home and community. A key focus of ours is to ensure that tenants understand their responsibilities and that includes being good neighbours and connecting with their communities. Kāinga Ora is also looking at new ways of how we support tenants and help them connect to support services when and if they need it.



[www.kaingaora.govt.nz](http://www.kaingaora.govt.nz)

New Zealand Government

**Kāinga Ora**  
Homes and Communities